

Pentru a cita lucrarea / To cite the paper:

Petrisor LE, Petrisor AI, Sarbu C (2003), Detecting Differences Between Romanian and American Cities Using Remote Sensing and GIS Techniques, 28th Annual Congress of the American-Romanian Academy of Arts and Sciences, June 5, 2003, Targu Jiu, Romania

# Detecting Differences Between Romanian and American Cities Using Remote Sensing and GIS Techniques

**Liliana-Elza Petrisor<sup>1</sup>**, Alexandru-Ionut Petrisor<sup>2</sup>, and  
Catalin Sarbu<sup>3</sup>

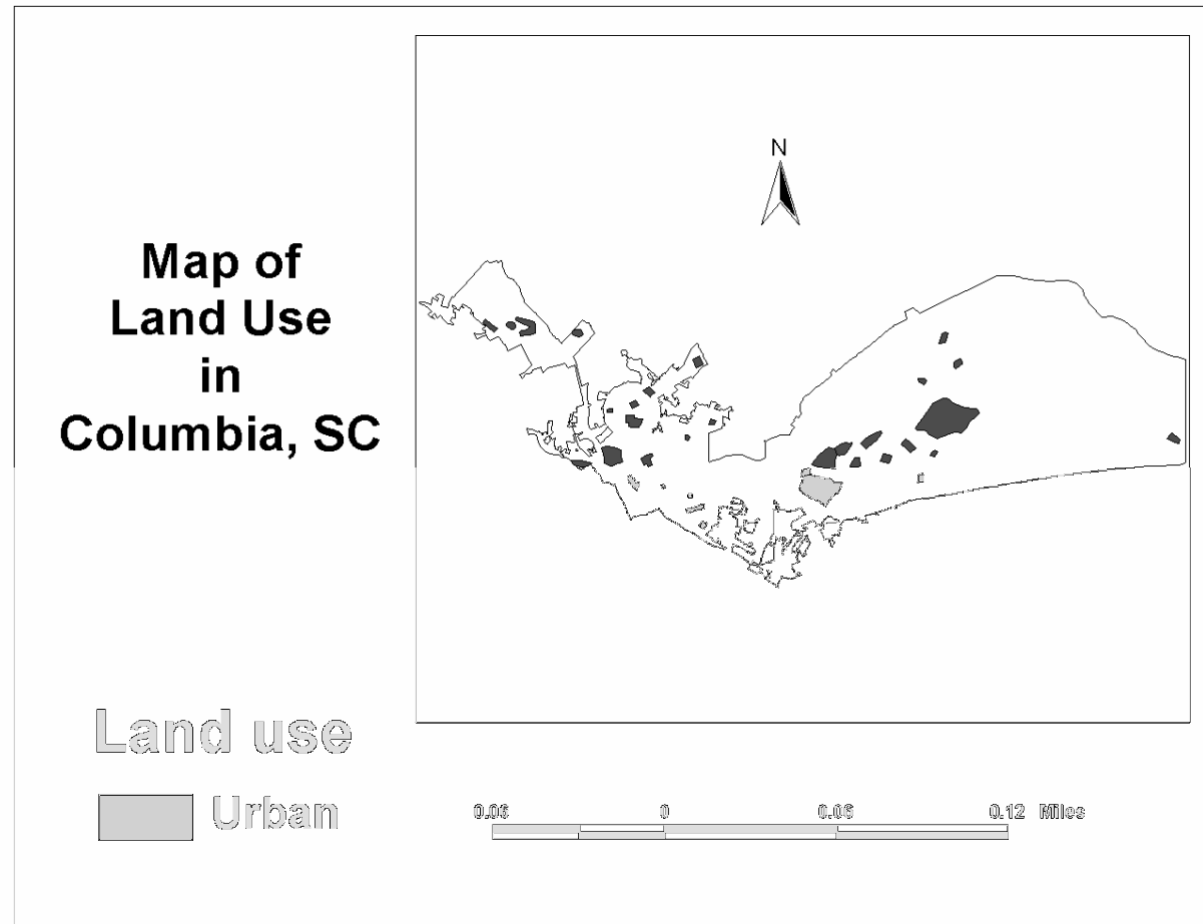
1 – BA, Chancellor, Ministry of Public Works, Transportation, and Housing, Bucharest, Romania

2 – MSPH, Graduate Assistant, Department of Environmental Health Sciences, Norman J. Arnold School of Public Health, Columbia, SC

3 – PhD, Director, National Institute for Research and Planning *URBANPROIECT*, Bucharest, Romania

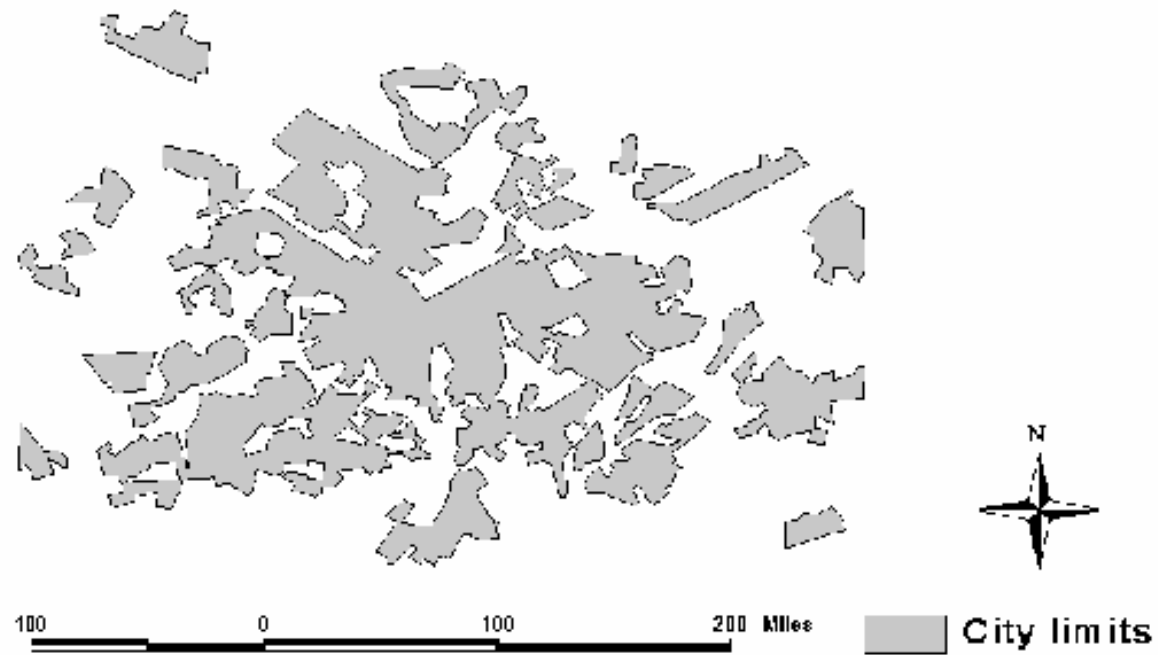
# Introduction

- Differences in legislation, especially minimum setback values
- Cultural differences, e.g. need for privacy in America
- Different definitions of urbanized areas
- Different impacts of the environment
- GIS used extensively for urban and environmental applications



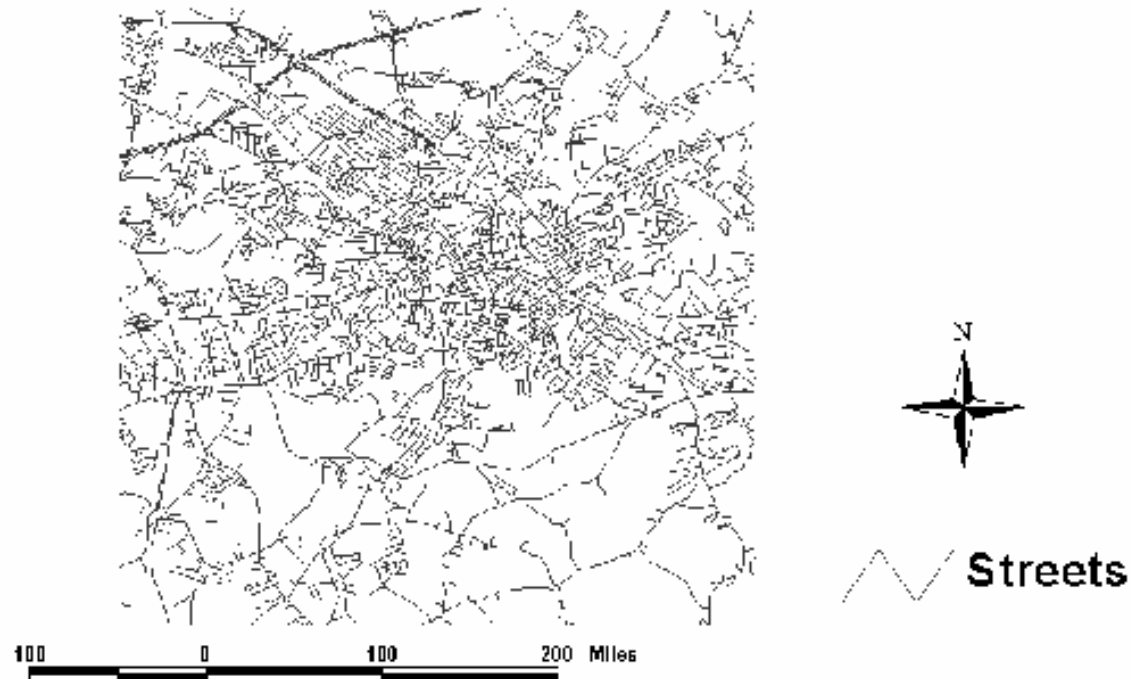
**Columbia, SC, US: City Map (Using Arcview GIS)**

## Spartanburg: City Shape



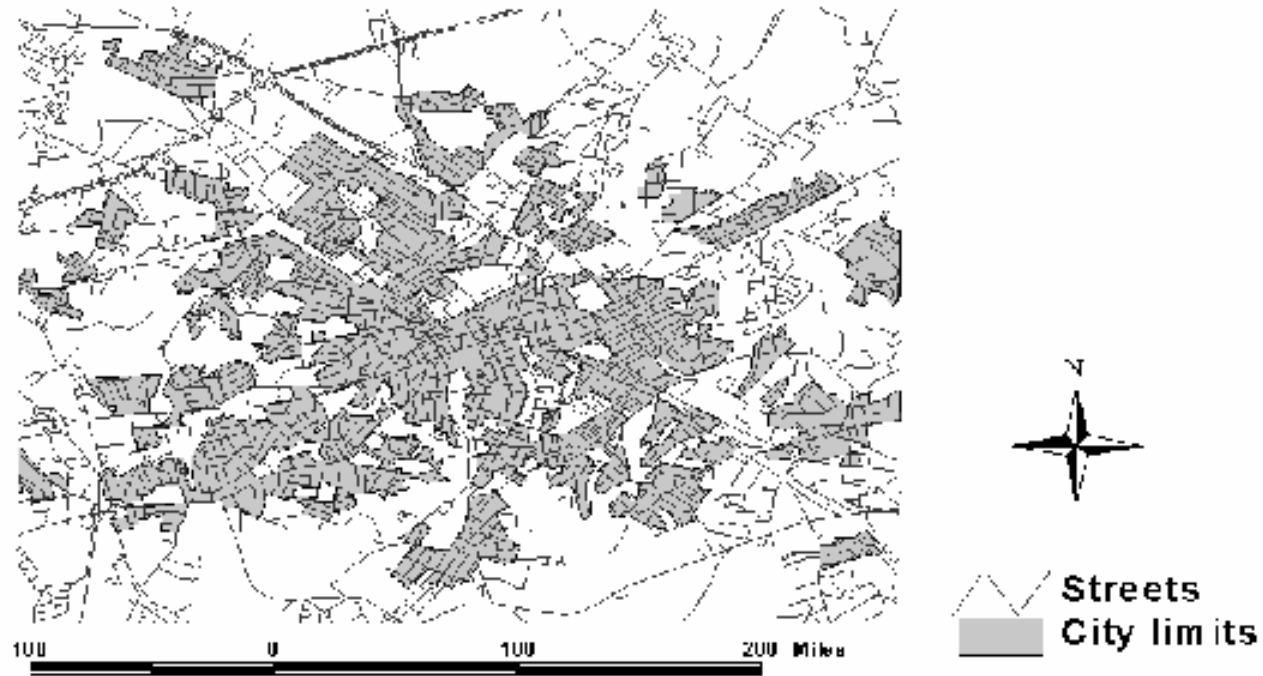
**Spartanburg, SC, US: City Map (Using Arcview GIS)**

## Spartanburg: Streets



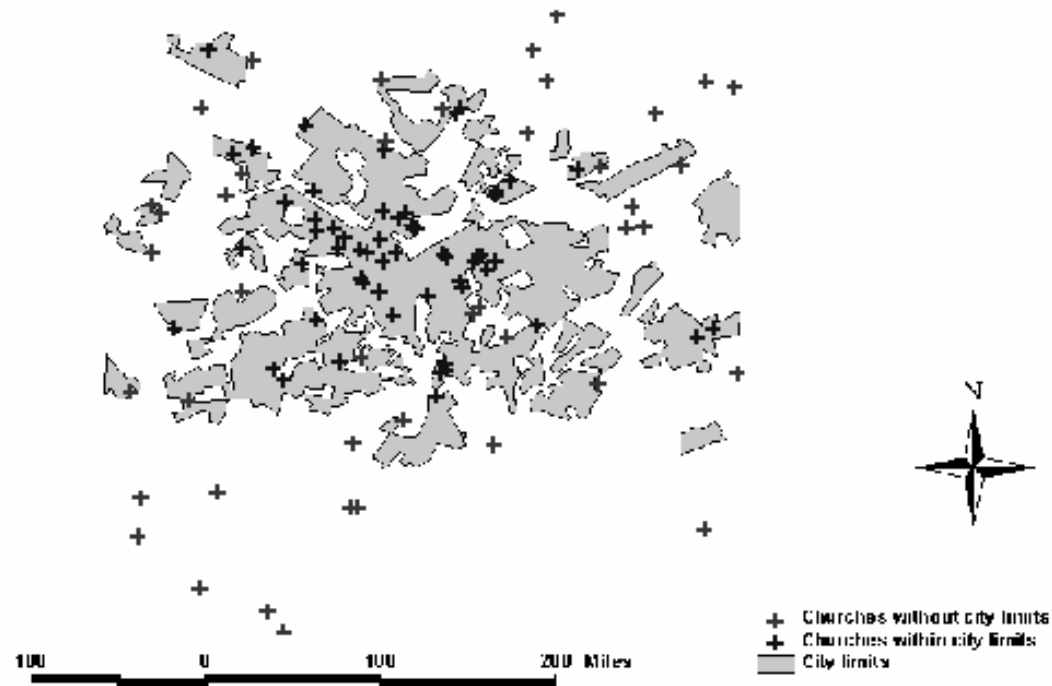
**Spartanburg, SC, US: Streets (Using Arcview GIS)**

## Spartanburg: Shape and Streets



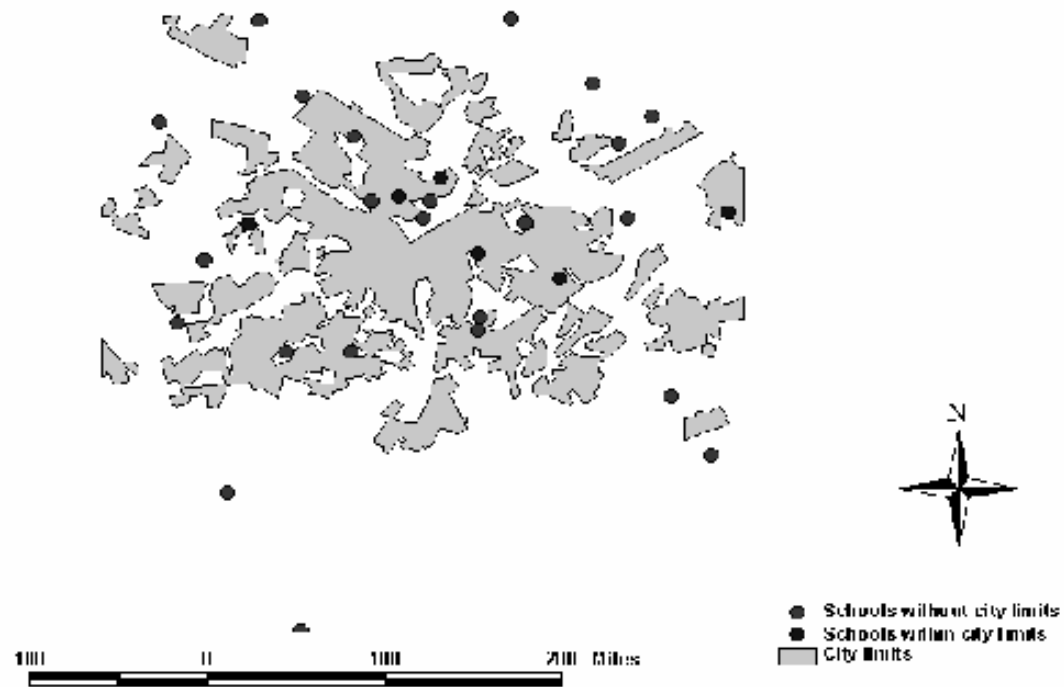
## Spartanburg, SC, US: Shape and Streets

# Spartanburg: Churches



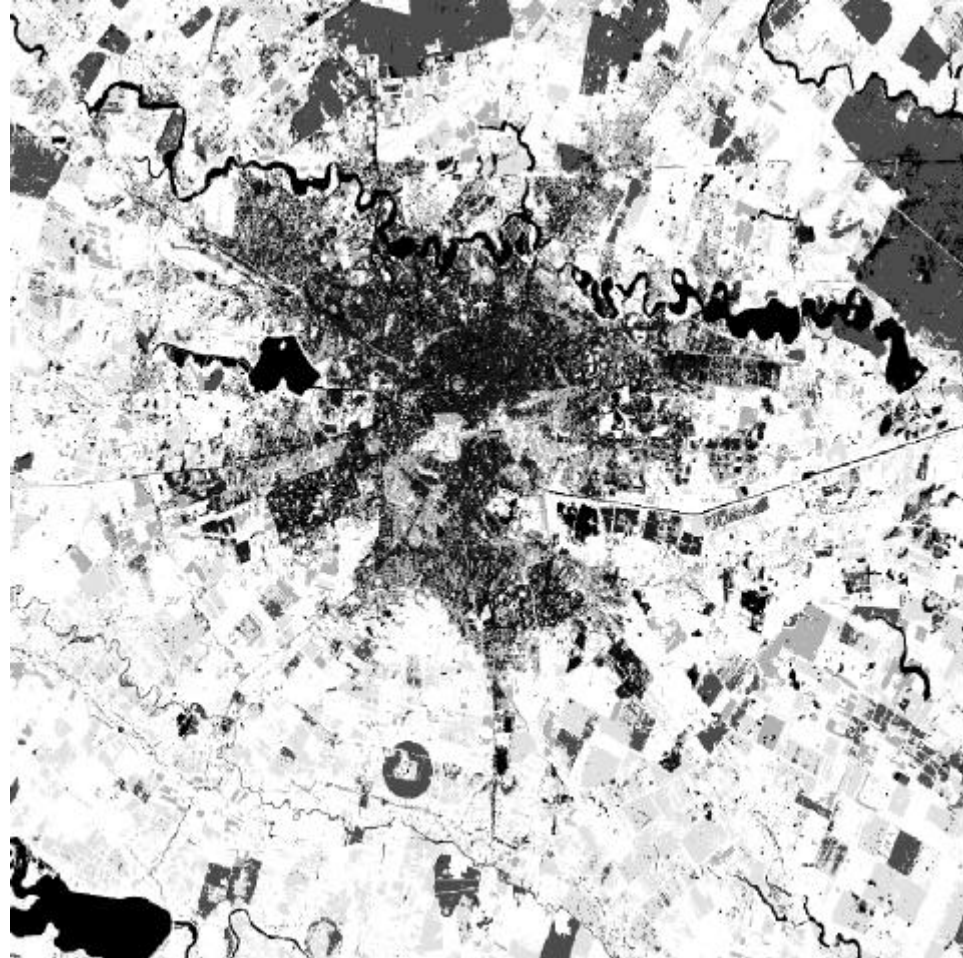
**Spartanburg, SC, US: Churches (Using Arcview GIS)**

## Spartanburg: Schools



**Spartanburg, SC, US: Schools (Using Arcview GIS)**

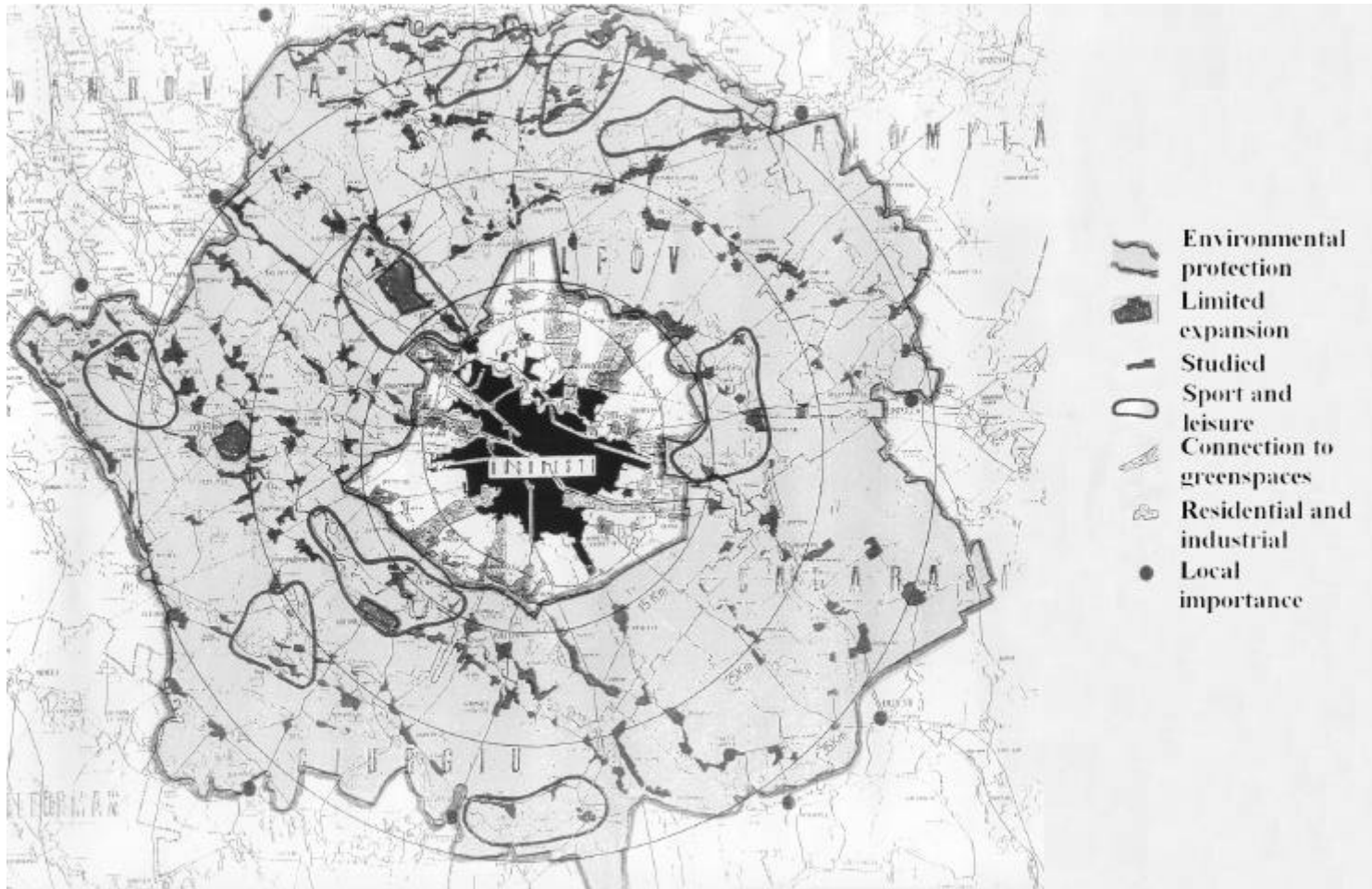




**Bucharest, Romania: A SPOT Image**



**Bucharest, Romania: City Map (Using Arcview GIS)**



## **Bucharest, Romania: City Development Plan**

# Discussion

- Islands of “non-city” areas in American cities vs. continuous areas in Romania
- City limits based on taxation in America vs. cultural aspects in Romania
- Tentacular (multi-nucleated) cities in America vs. concentric cities in Romania
- Diffuse growth and lower density of population vs. controlled expansion and higher density in Romania